



SHEET NO. **S201**

REVISIONS  
11/28/07

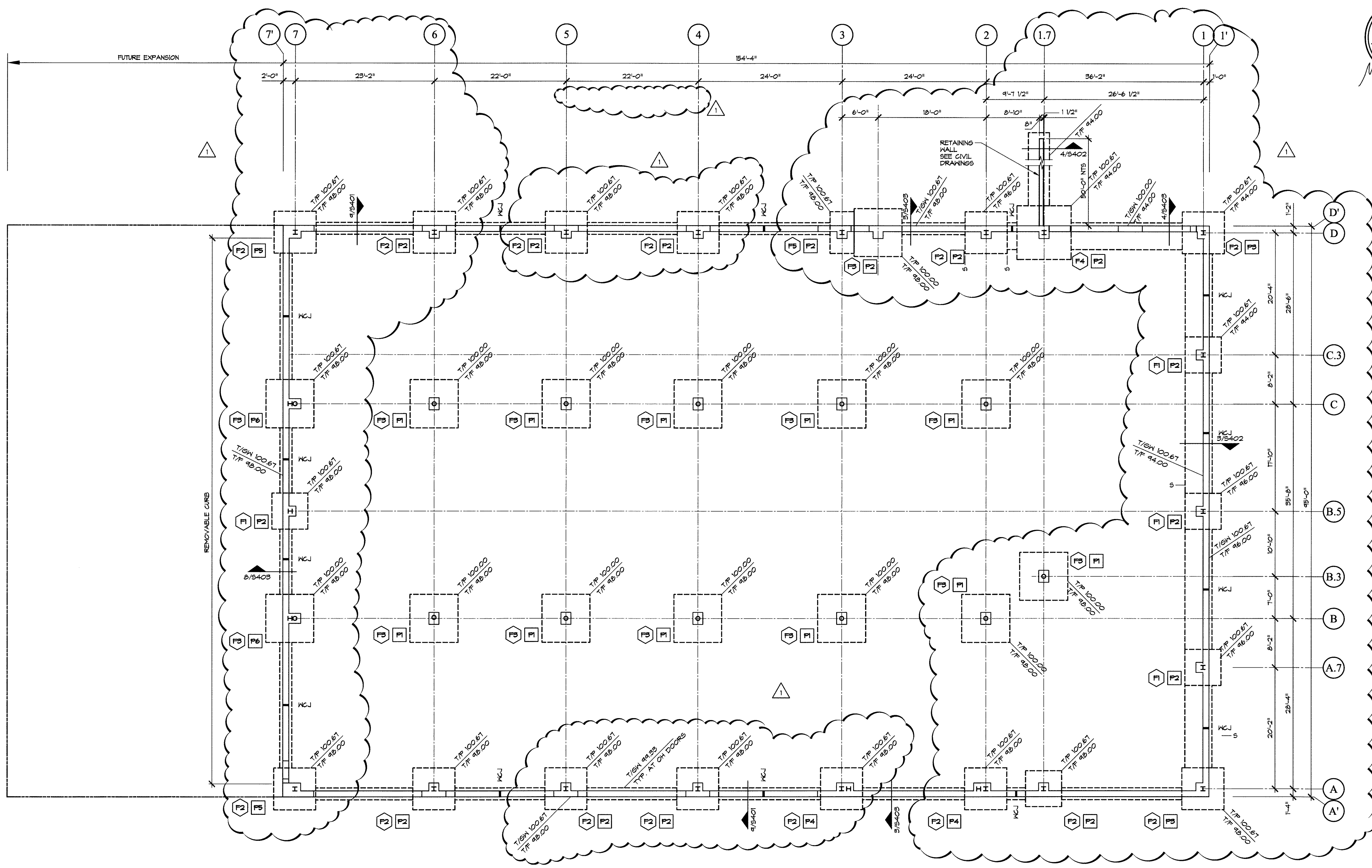
JOB NO. 40567  
DATE 11/28/07  
DRAWN BY DT  
CHECKED BY MAC

**GBC DESIGN, INC.**  
8978 W. Market St. Akron, OH 44333-8906  
Phone 390-896-0226 Fax 390-896-5752

**SAAD DEVELOPMENT CORPORATION**  
3601 SPRING HILL BUSINESS PARK, SUITE 200  
MOBILE, AL 36608  
PHONE: 251-476-7223  
FAX: 251-476-7223

**FEDEX GROUND STATESBORO, GA.**  
PACKAGE DISTRIBUTION CENTER  
3400 ZELL MILLER PARKWAY  
STATESBORO, GA. 30458  
FOUNDATION PLAN

SHEET NO. **S201**



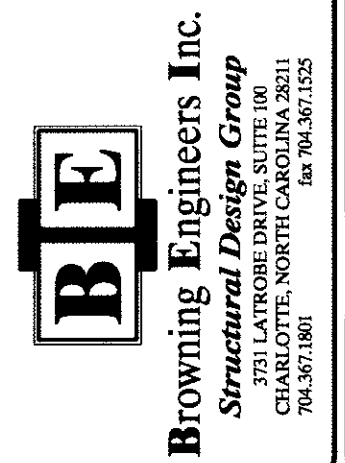
**1 FOUNDATION PLAN**  
SCALE: 1/8" = 1'-0"

**LEGEND**

**GENERAL NOTES**

1. FINISH FLOOR DATUM ELEVATION +100'-0". ALL ELEVATIONS ARE REFERENCED FROM THIS DATUM.
2. SEE TYPICAL DETAILS FOR APPLICABLE DETAILS NOT SPECIFICALLY REFERENCED.
3. ALL OPENINGS ARE SHOWN FOR CONVENIENCE ONLY. FINAL LOCATIONS AND SIZES SHALL BE OBTAINED FROM ARCHITECTURAL DRAWINGS.
4. SEE STRUCTURAL NOTES FOR MORE INFORMATION.

- = FOOTING SIZE, SEE FOOTING SCHEDULE
- = PIER DETAIL, SEE FOUNDATION DETAILS
- S = STEP FOUNDATION, SEE TYPICAL DETAILS
- T/F = TOP OF FOOTING ELEVATION REFERENCED FROM FINISH FLOOR
- T/EF = TOP OF EXIST. FOOTING ELEVATION REFERENCED FROM FINISH FLOOR
- T/P = TOP OF PIER ELEVATION REFERENCED FROM FINISH FLOOR
- T/GW = TOP OF GRADE WALL ELEVATION FROM FINISH FLOOR
- KCJ = WALL CONTRACTION JOINT, SEE TYPICAL DETAIL
- = NEW CONSTRUCTION
- - - = EXISTING CONSTRUCTION
- - - - - = OUT LINE OF FOUNDATION BELOW
- = DETAIL NUMBER
- = DRAWING NUMBER
- = SECTION CUT



STATESBORO, GA. 30458