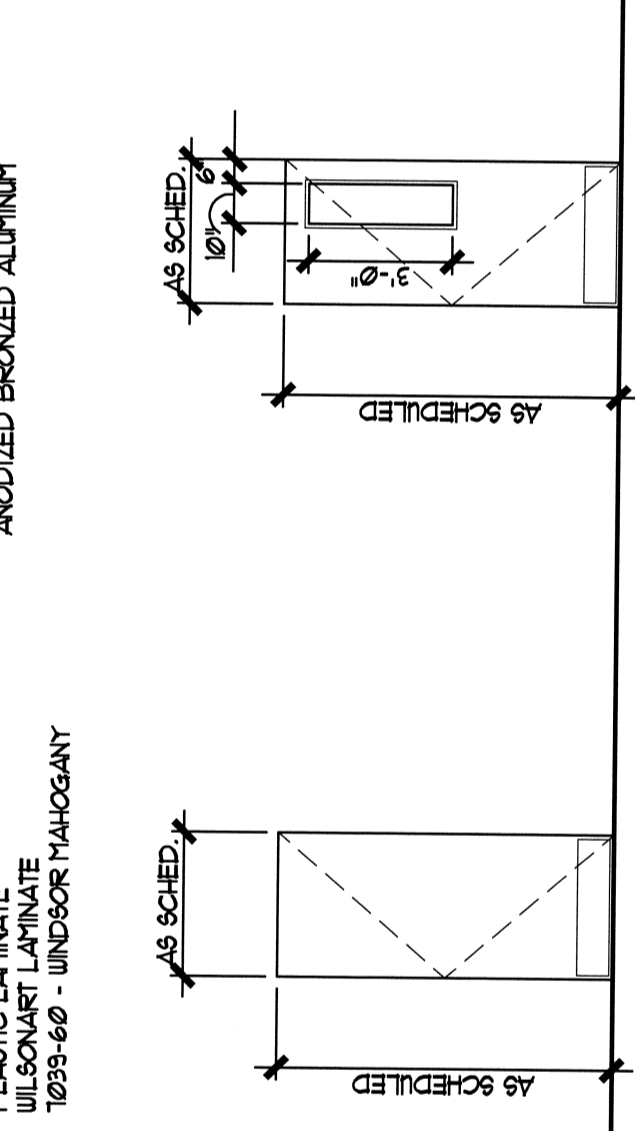
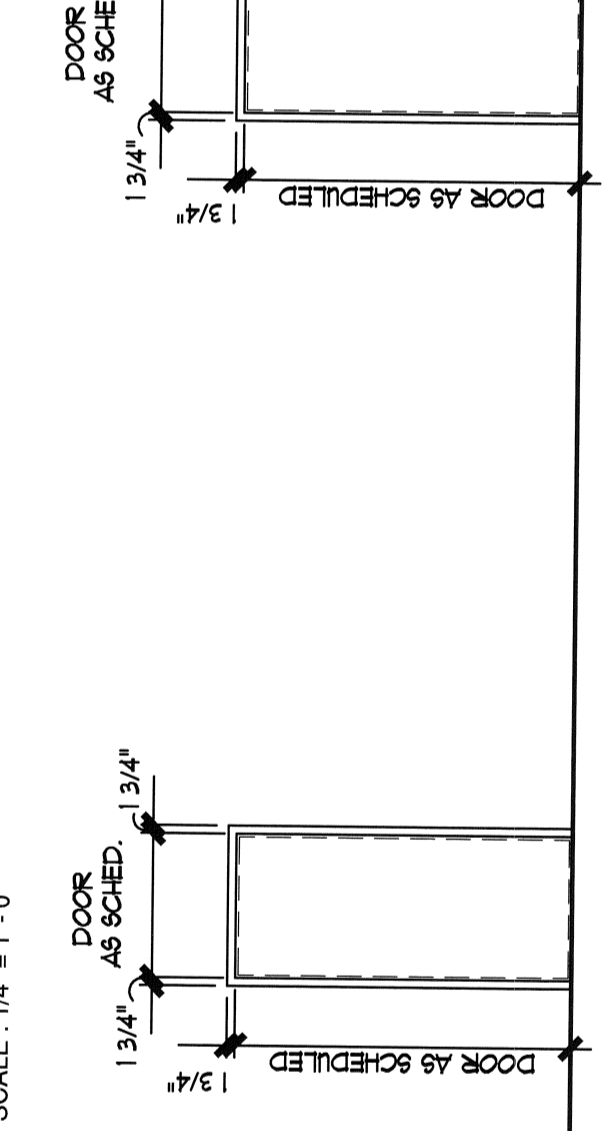


DOOR NUMBER	DOOR TYPE	FRAME	SIZE	HURCHURE SET	HEAD	TAILS	BULL	REMARK
100A	-	-	-	1	-	-	1/A4621	BASE BUILDING
100B	B	AA	3'-6" X 1'-0"	2	1/A4621	2/A4621	1/A4621	
101	A	AA	3'-0" X 1'-0"	5	1/A4621	2/A4621	1/A4621	
102	AA	AA	3'-0" X 1'-0"	5	4/A4621	1/A4621	1/A4621	CASE FRAME OFFERING
102A	B	AA	3'-0" X 1'-0"	4	1/A4621	1/A4621	1/A4621	
103	B	AA	3'-0" X 1'-0"	2	1/A4621	1/A4621	1/A4621	
104	A	AA	3'-0" X 1'-0"	3	1/A4621	1/A4621	1/A4621	
105	B	AA	3'-0" X 1'-0"	4	1/A4621	1/A4621	1/A4621	
106	B	AA	3'-0" X 1'-0"	4	1/A4621	1/A4621	1/A4621	
107	A	AA	3'-0" X 1'-0"	4	1/A4621	1/A4621	1/A4621	
108	A	AA	3'-0" X 1'-0"	4	1/A4621	1/A4621	1/A4621	
109	A	AA	3'-0" X 1'-0"	5	1/A4621	1/A4621	1/A4621	(1) 2"x3" LAMINATE PER REP
110	A	AA	3'-0" X 1'-0"	5	1/A4621	1/A4621	1/A4621	
111	A	AA	3'-0" X 1'-0"	5	1/A4621	1/A4621	1/A4621	
112	B	AA	3'-0" X 1'-0"	5	1/A4621	1/A4621	1/A4621	
113	B	AA	3'-0" X 1'-0"	6	1/A4621	1/A4621	1/A4621	
114	B	AA	3'-0" X 1'-0"	4	1/A4621	1/A4621	1/A4621	
115	D	AA	3'-0" X 1'-0"	4	1/A4621	1/A4621	1/A4621	
116	B	AA	3'-0" X 1'-0"	3	1/A4621	1/A4621	1/A4621	
117	C	BB	3'-0" X 1'-0"	3	1/A4621	1/A4621	1/A4621	
118	F	CC	3'-0" X 1'-0"	3	1/A4621	1/A4621	1/A4621	3/4 HR FIRE-RATED
119	E	CC	3'-0" X 1'-0" 4'-2" X 1'-0"	3	1/A4621	1/A4621	1/A4621	EXTERIOR
120	A	AA	3'-0" X 1'-0"	9	1/A4621	1/A4621	1/A4621	
121	A	AA	3'-0" X 1'-0"	9	1/A4621	1/A4621	1/A4621	
124	-	-	3'-0" X 1'-0"	1	-	-	-	GLASS DOOR/ ALUMINUM FRAME

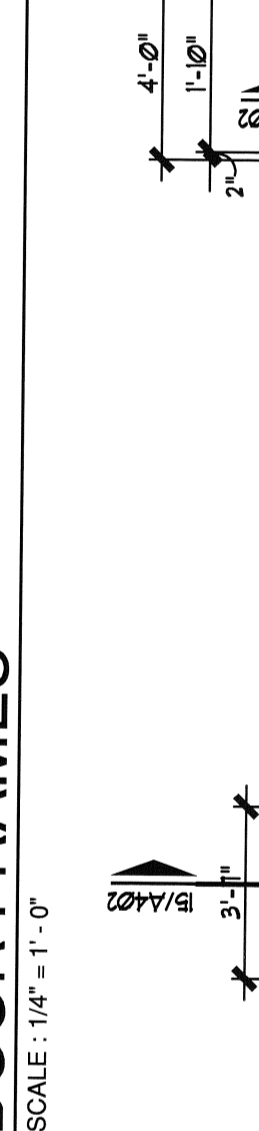
### DOOR & FRAME FINISH SCHEDULE



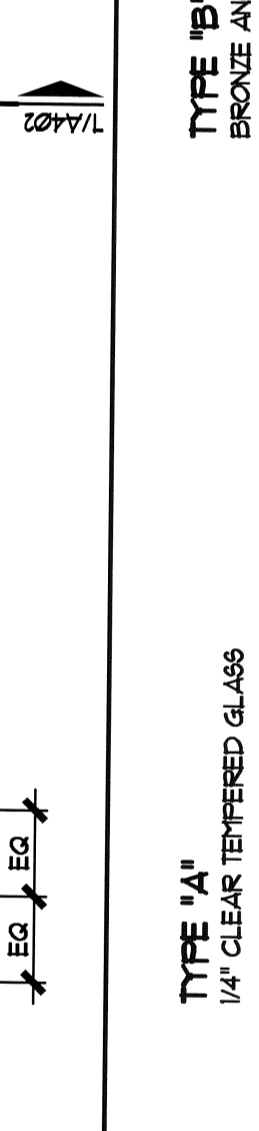
**DOOR TYPES**  
SCALE: 1/4" = 1'-0"



**WINDOW TYPES**  
SCALE: 1/4" = 1'-0"



**DOOR FRAMES**  
SCALE: 1/4" = 1'-0"



**WINDOW TYPES**  
SCALE: 1/4" = 1'-0"

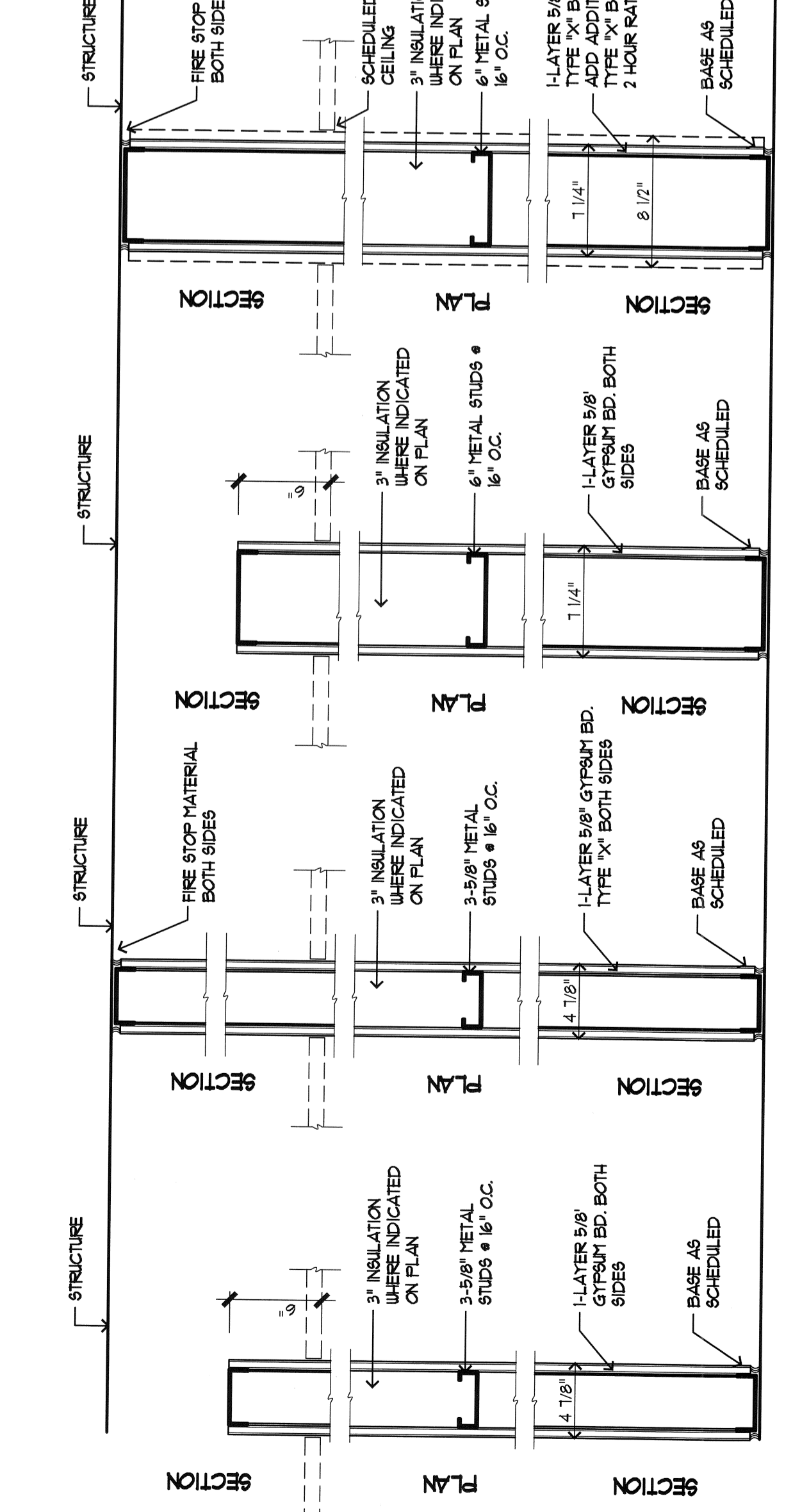
### DOOR SCHEDULE

NOTE: POST A SIGN BY DOORS USA SETTING THE FOLLOWING:  
\* DOOR IS TO REMAIN UNLOCKED DURING BUSINESS HOURS

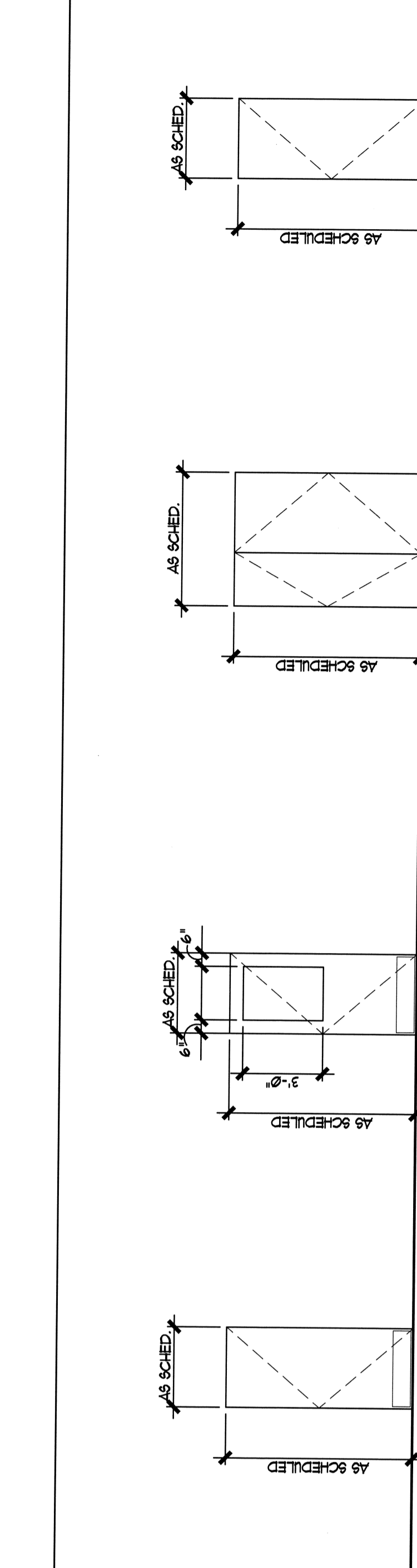
DOOR NUMBER	DOOR TYPE	FRAME	SIZE	HURCHURE SET	HEAD	TAILS	BULL	REMARK
100A	-	-	-	1	-	-	1/A4621	BASE BUILDING
100B	B	AA	3'-6" X 1'-0"	2	1/A4621	2/A4621	1/A4621	
101	A	AA	3'-0" X 1'-0"	5	1/A4621	2/A4621	1/A4621	
102	AA	AA	3'-0" X 1'-0"	5	4/A4621	1/A4621	1/A4621	CASE FRAME OFFERING
102A	B	AA	3'-0" X 1'-0"	4	1/A4621	1/A4621	1/A4621	
103	B	AA	3'-0" X 1'-0"	2	1/A4621	1/A4621	1/A4621	
104	A	AA	3'-0" X 1'-0"	3	1/A4621	1/A4621	1/A4621	
105	B	AA	3'-0" X 1'-0"	4	1/A4621	1/A4621	1/A4621	
106	B	AA	3'-0" X 1'-0"	4	1/A4621	1/A4621	1/A4621	
107	A	AA	3'-0" X 1'-0"	4	1/A4621	1/A4621	1/A4621	
108	A	AA	3'-0" X 1'-0"	4	1/A4621	1/A4621	1/A4621	
109	A	AA	3'-0" X 1'-0"	5	1/A4621	1/A4621	1/A4621	(1) 2"x3" LAMINATE PER REP
110	A	AA	3'-0" X 1'-0"	5	1/A4621	1/A4621	1/A4621	
111	A	AA	3'-0" X 1'-0"	5	1/A4621	1/A4621	1/A4621	
112	B	AA	3'-0" X 1'-0"	5	1/A4621	1/A4621	1/A4621	
113	B	AA	3'-0" X 1'-0"	6	1/A4621	1/A4621	1/A4621	
114	B	AA	3'-0" X 1'-0"	4	1/A4621	1/A4621	1/A4621	
115	D	AA	3'-0" X 1'-0"	4	1/A4621	1/A4621	1/A4621	
116	B	AA	3'-0" X 1'-0"	3	1/A4621	1/A4621	1/A4621	
117	C	BB	3'-0" X 1'-0"	3	1/A4621	1/A4621	1/A4621	
118	F	CC	3'-0" X 1'-0"	3	1/A4621	1/A4621	1/A4621	3/4 HR FIRE-RATED
119	E	CC	3'-0" X 1'-0" 4'-2" X 1'-0"	3	1/A4621	1/A4621	1/A4621	EXTERIOR
120	A	AA	3'-0" X 1'-0"	9	1/A4621	1/A4621	1/A4621	
121	A	AA	3'-0" X 1'-0"	9	1/A4621	1/A4621	1/A4621	
124	-	-	3'-0" X 1'-0"	1	-	-	-	GLASS DOOR/ ALUMINUM FRAME

### APPLIANCE LEGEND

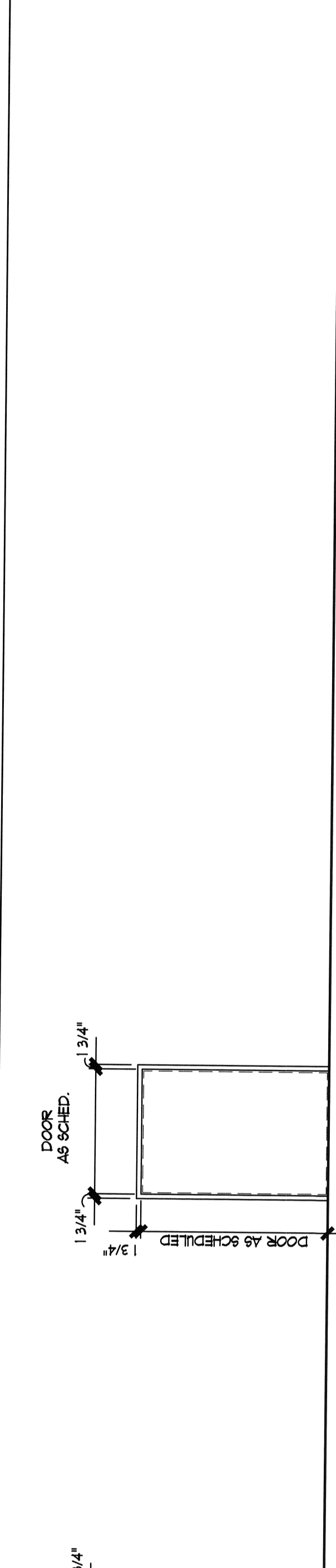
- DISCHARGERS**  
1. 24" x 29-5/8" d x 32-1/4" h  
MANUFACTURER: GEMINI  
MODEL NUMBER: 2301  
SIZE: 23-5/8" x 23-1/4" x 33-1/2"  
COLOR: WHITE  
NOTES: PROVIDED AND INSTALLED BY GC.
- SIDE BY SIDE REFRIGERATORS**  
1. 24" x 29-5/8" d x 32-1/4" h  
MANUFACTURER: GENERAL ELECTRIC  
MODEL NUMBER: 20-3/4" x 34-1/8" d x 69-1/4" h  
COLOR: WHITE  
NOTES: PROVIDED AND INSTALLED BY GC.
- COUNTERTOP DISHWASHER**  
1. 24" x 29-5/8" d x 32-1/4" h  
MANUFACTURER: GENERAL ELECTRIC  
MODEL NUMBER: 20-3/4" x 34-1/8" d x 69-1/4" h  
COLOR: WHITE  
NOTES: PROVIDED AND INSTALLED BY GC.
- CASE HAZERS**  
1. 24" x 29-5/8" d x 32-1/4" h  
MANUFACTURER: GENERAL ELECTRIC  
MODEL NUMBER: 20-3/4" x 34-1/8" d x 69-1/4" h  
COLOR: WHITE  
NOTES: PROVIDED AND INSTALLED BY GC.
- VENTING MACHINE**  
1. 24" x 29-5/8" d x 32-1/4" h  
MANUFACTURER: GENERAL ELECTRIC  
MODEL NUMBER: 20-3/4" x 34-1/8" d x 69-1/4" h  
COLOR: WHITE  
NOTES: PROVIDED BY TENDANT - REQUIRES WATERLINE



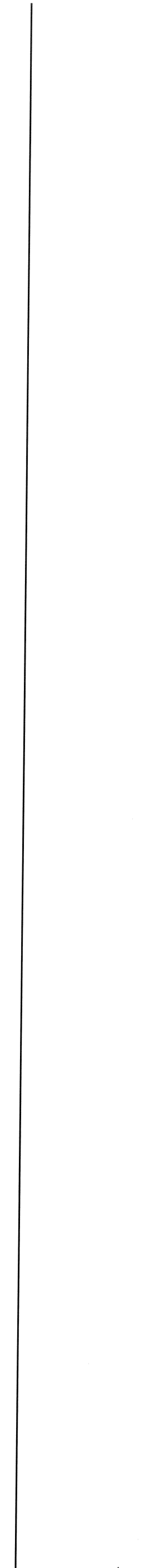
**PARTITION TYPES**  
SCALE: 1/4" = 1'-0"



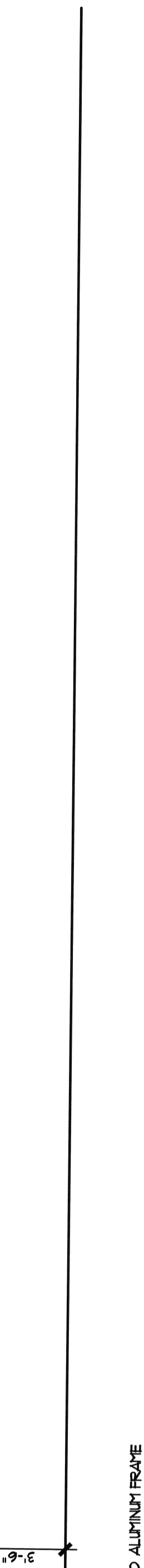
**DOOR TYPES**  
SCALE: 1/4" = 1'-0"



**WINDOW TYPES**  
SCALE: 1/4" = 1'-0"



**DOOR FRAMES**  
SCALE: 1/4" = 1'-0"



**WINDOW TYPES**  
SCALE: 1/4" = 1'-0"

Sheet Number	09/23/07	Revision:	ISSUED FOR PERMIT AND PROPOS
Issuance Date	09/14/07	Description	HAGER HAS BEEN REVIEWED AND APPROVAL

### PARTITION SCHEDULE / DOOR & WINDOW SCHEDULE

Project Number	2715
Sheet Date	September 14, 2007
Scale	NOTED ON DRAWING
Drawn By	RCF, JPP
Checked By	HDS

### HARDWARE SCHEDULE

Sheet Number	A401
Copyright	© 2007 Sikes Group, Inc. All rights reserved and appear as a reproduction of the work.