

**Means of Egress Analysis**

Maximum Allowable Floor Area per Occupant:  
(Table 1004.1.2)  
100 SF per occupant

7,465 SF  
75 Maximum Occupants

Minimum number of exits for occupant load: Table 1018.1  
Occupant Load: 2 Actual No. of Exits: 3

Total Exit Travel Distance: (Table 1015.1)  
1-500

200 feet maximum with sprinkler system  
115 feet maximum actual travel to a primary exit  
95 feet maximum actual travel to a secondary exit

\*A\* 40 feet maximum actual travel to a primary exit  
\*B\* 40 feet maximum actual travel to a primary exit

**Restroom Fixture Analysis**

Plumbing Fixtures  
(Table 2902.1)  
Lavatories  
1 per 15 for Male and Female

Waterclosets  
1 per 25 for the first 50 and 1 per 50 for the remainder exceeding 50

Drinking Fountains  
1 per 100

Service Sink

Filtered Water Dispenser

| Required | Provided |
|----------|----------|
| 2        | 3        |
| 2        | 3        |
| 1        | 1        |
| 1        | 1        |

**Building Code Analysis**

Scope of Work  
INTERIOR REMODEL CONSISTING OF APPROXIMATELY 7,466 S.F. OUT OF AN EXISTING 37,954 S.F. ONE-STORY BUILDING TO BE A 21 PATIENT CHAIR HOME-HEMO TRAINING FACILITY WILL BE EQUIPPED WITH COMPLETE WATER PURIFICATION SYSTEM AS WELL AS WITH ADMINISTRATIVE STAFF AREAS.

Fire Suppression System:  
Fully Sprinklered Per NFPA 13

Fire Detection & Alarm System:  
Yes Per NFPA 101, Sect. 18.3.4

Occupancy Type: Section 308.5.1  
Group I-4 Adult Care Facility

Construction Type: Table 601  
Type II B Per IBC Chapter 6

Allowable Height & Building Area: Table 503  
1 Story (tabulated), 1 Story (actual)  
9000 sf (tabulated), 7,465 sf (actual)

Standard Ceiling Height:  
10'-0" typical

New Interior Construction:  
Rated Assemblies:  
One (1) Hour Partitions for Storage greater than 100 SF.  
per 2000 Edition (NFPA 101).

Building Name and Location:  
Davita Dialysis New Orleans East  
5555 Bullard Avenue, Suite 110  
New Orleans, Louisiana 70128

Governing Codes:  
2006 International Building Code  
2003 International Fire Code  
2006 International Mechanical Code  
2000 Louisiana State Plumbing Code  
2006 International Energy Conservation Code  
2006 National Electrical Code  
2000 NFPA  
ADAAG Accessibility Standards

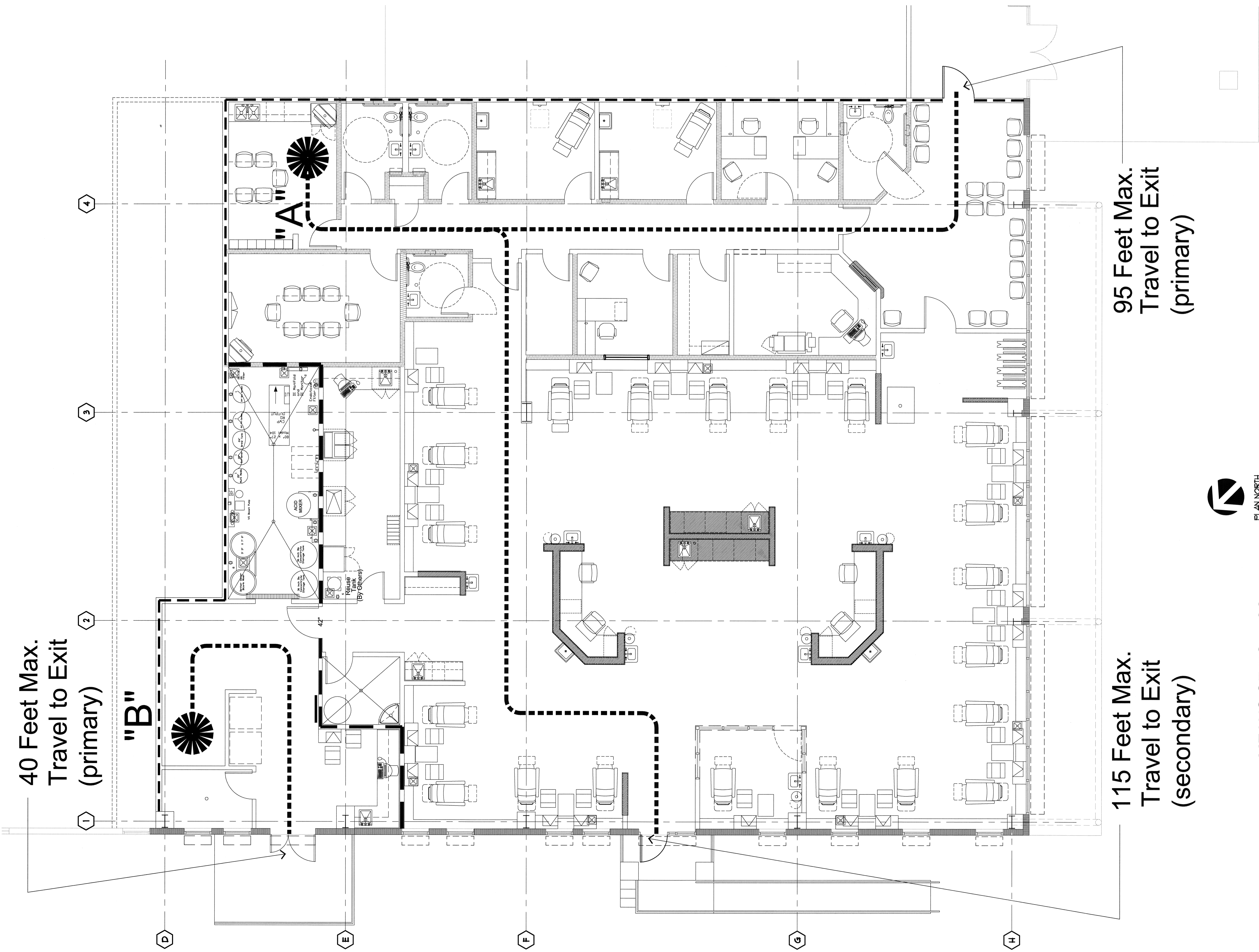
Project Square Footage: 7,465 SF  
Actual Area:

**Special Notes For Clinic**

Section 517.2 of the 2006 NEC defines patient areas.  
The subcategory called general care areas includes the use of intravenous lines and electromedical devices. The subcategory called critical care area also includes the use of intravenous lines and electromedical devices, but additionally invasive (cutting of the skin to get inside the body) procedures are conducted in such an area. The attachment of intravenous lines is not considered an "invasive procedure," therefore this facility is classified, in its entirety, as a general care area.

Section 517.45  
Essential electrical systems for other health care facilities is applicable to general care areas and ambulatory health care facilities. However, since neither "electrical life support equipment" nor "critical care areas" are present in this facility, neither (B) nor (C), are applicable. Therefore, the requirements of 517.30 through 517.35 (Referenced in those subsections) are not applicable. No alternate source of power is required.

Emergency egress lighting is being provided by back-up battery ballasts within lighting fixtures.  
Within the patient treatment area, each hemodialysis machine is equipped with its own internal battery back-up in case of electrical malfunction.



40 Feet Max.  
Travel to Exit  
(primary)

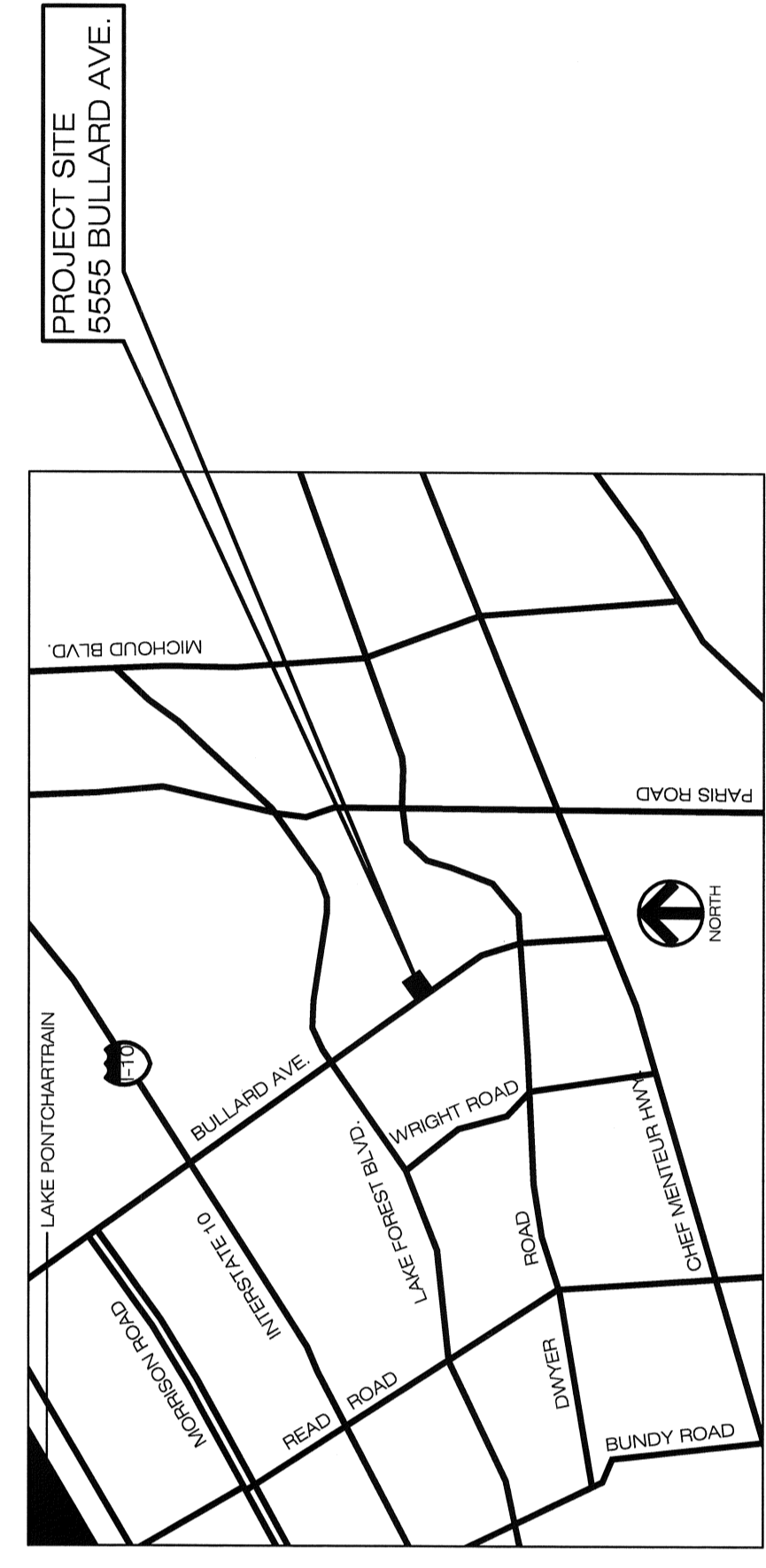
115 Feet Max.  
Travel to Exit  
(secondary)

95 Feet Max.  
Travel to Exit  
(primary)



MEANS OF EGRESS PLAN  
SCALE: 3/16"=1'-0"

**Building Location**



| Sheet Number | Issuance Date | Revision / Description               |
|--------------|---------------|--------------------------------------|
| 06/20/07     |               | MAILED FOR CHAIR REVIEW AND APPROVAL |
| 09/14/07     |               | MAILED FOR PERMIT AND PROGRAM        |

Project  
**Davita**  
FLEUR DE LIS CLINIC  
5555 BULLARD AVE, Suite 110  
NEW ORLEANS, LA. 70128

Sheet Title  
**LIFE SAFETY**

|                |                    |
|----------------|--------------------|
| Project Number | 2715               |
| Sheet Date     | September 14, 2007 |
| Scale          | NOTED ON DRAWING   |
| Drawn By       | JAV                |
| Checked By     | HDS                |