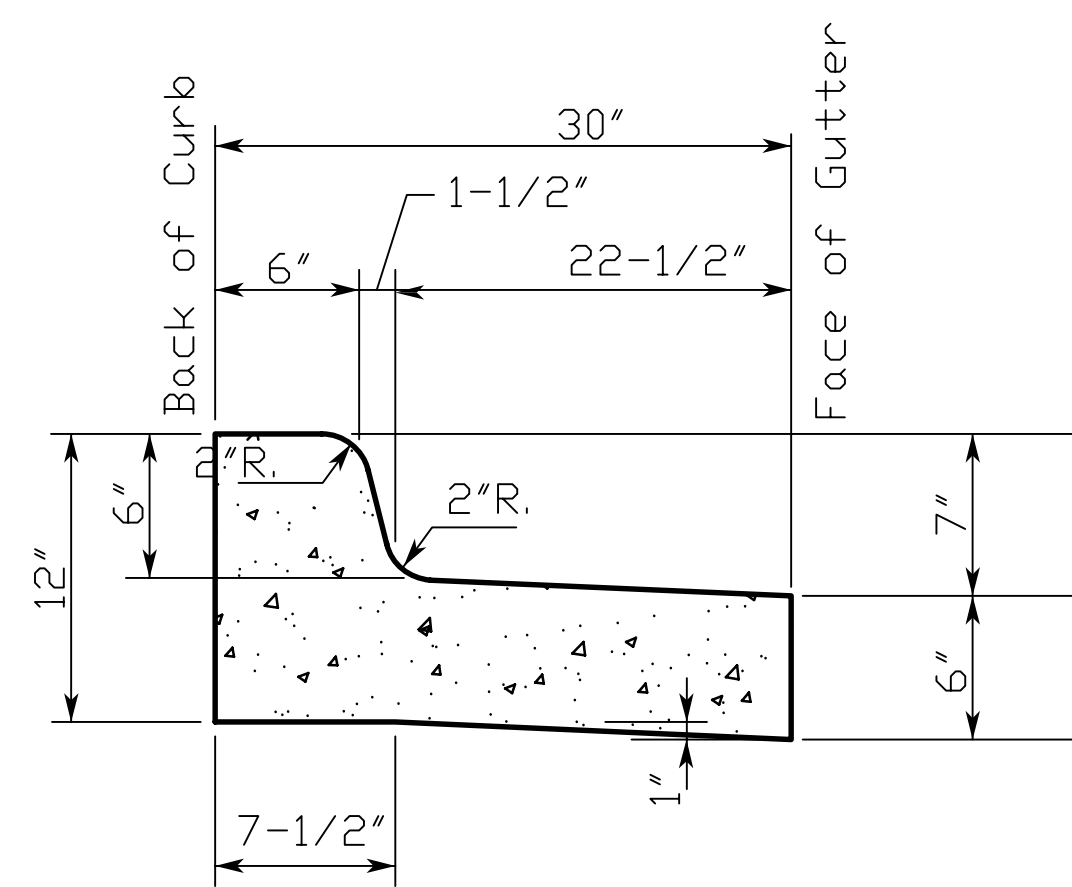


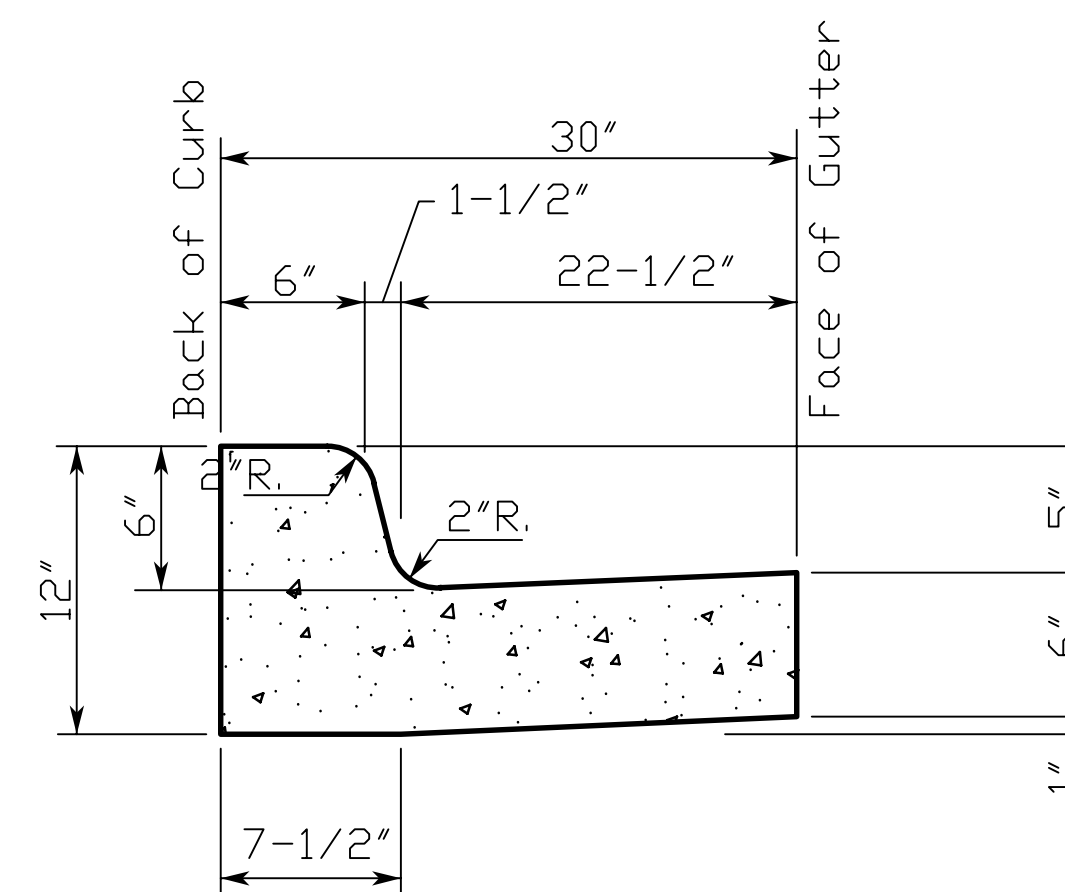
NON-TRAFFIC AREAS  
STORM PIPE BEDDING  
NOT TO SCALE



WATER RELEASING  
CURB AND GUTTER

NOT TO SCALE  
CONSTRUCTION JOINTS MAY BE FORMED BY 1/8" METAL PLATES REMOVED AFTER FINISHING OR BY CUTTING CURB AT 15' INTERVALS, TO 1/3 OF FULL DEPTH. ROUND ALL EDGES WITH 1/4" INCH RAD. GROOVE FINISHING TOOL.

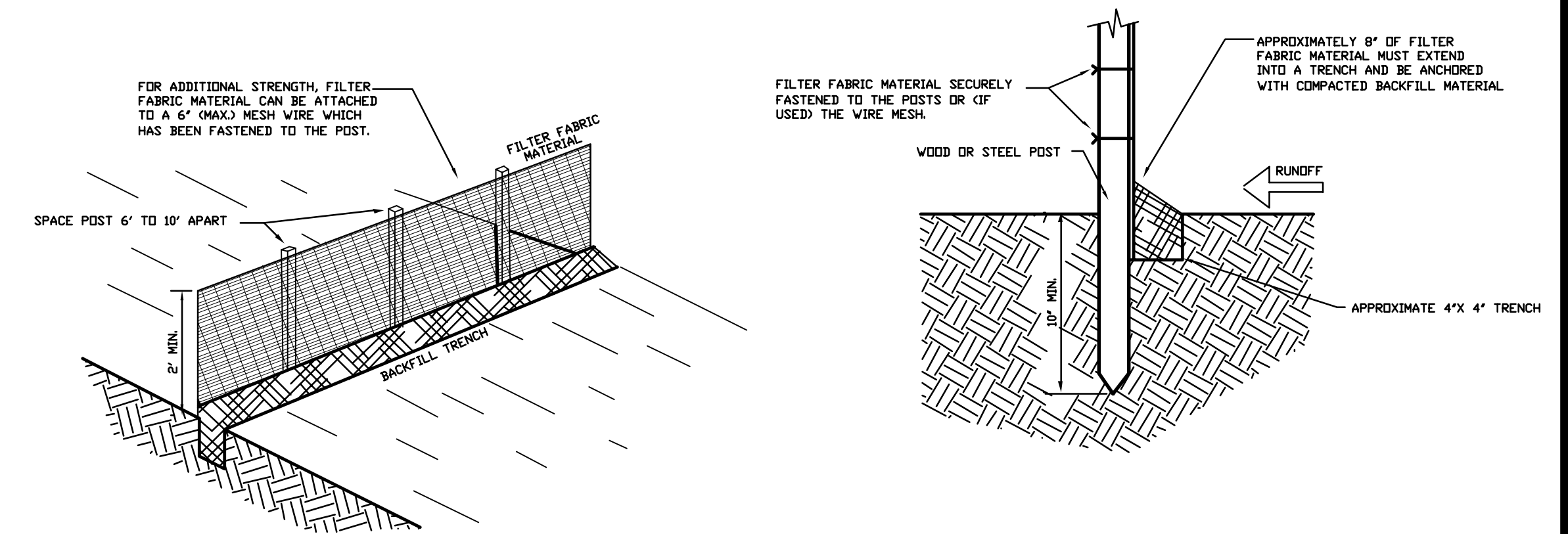
1/2" PREMOULDED EXPANSION JOINT (BITUMINOUS) SHALL BE USED AT 75' INTERVALS. ALL EDGES AND JOINTS TO BE ROUNDED TO 1/4" INCH RADIUS.



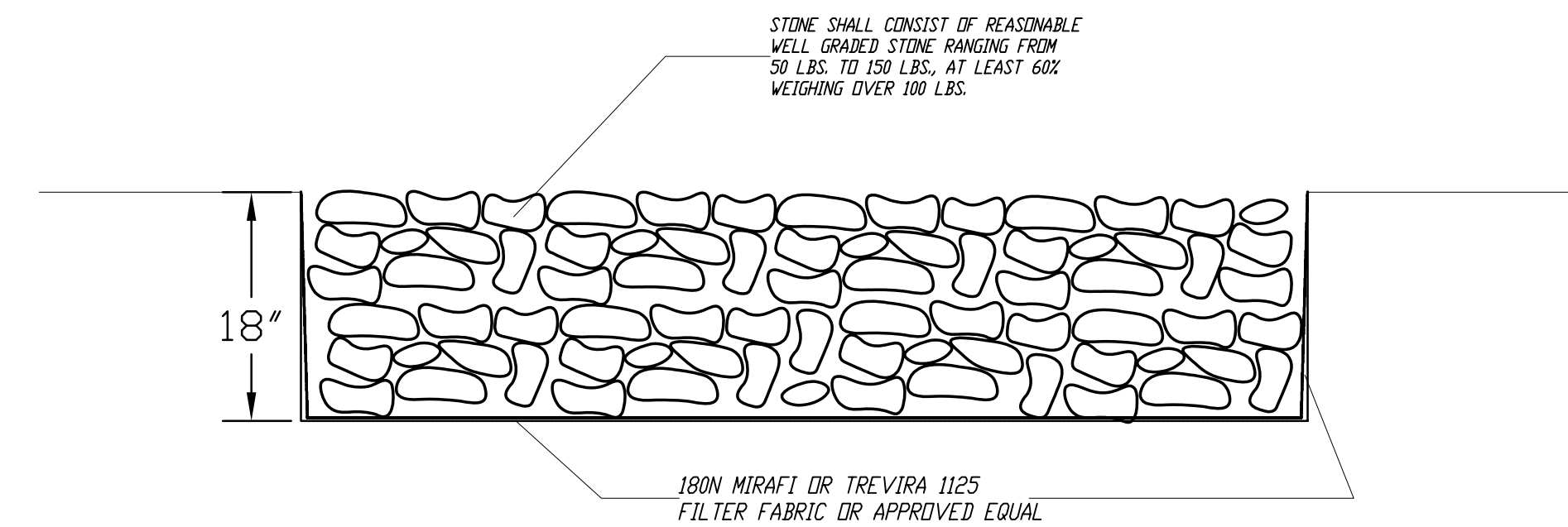
STANDARD CURB AND GUTTER

NOT TO SCALE  
CONSTRUCTION JOINTS MAY BE FORMED BY 1/8" METAL PLATES REMOVED AFTER FINISHING OR BY CUTTING CURB AT 15' INTERVALS, TO 1/3 OF FULL DEPTH. ROUND ALL EDGES WITH 1/4" INCH RAD. GROOVE FINISHING TOOL.

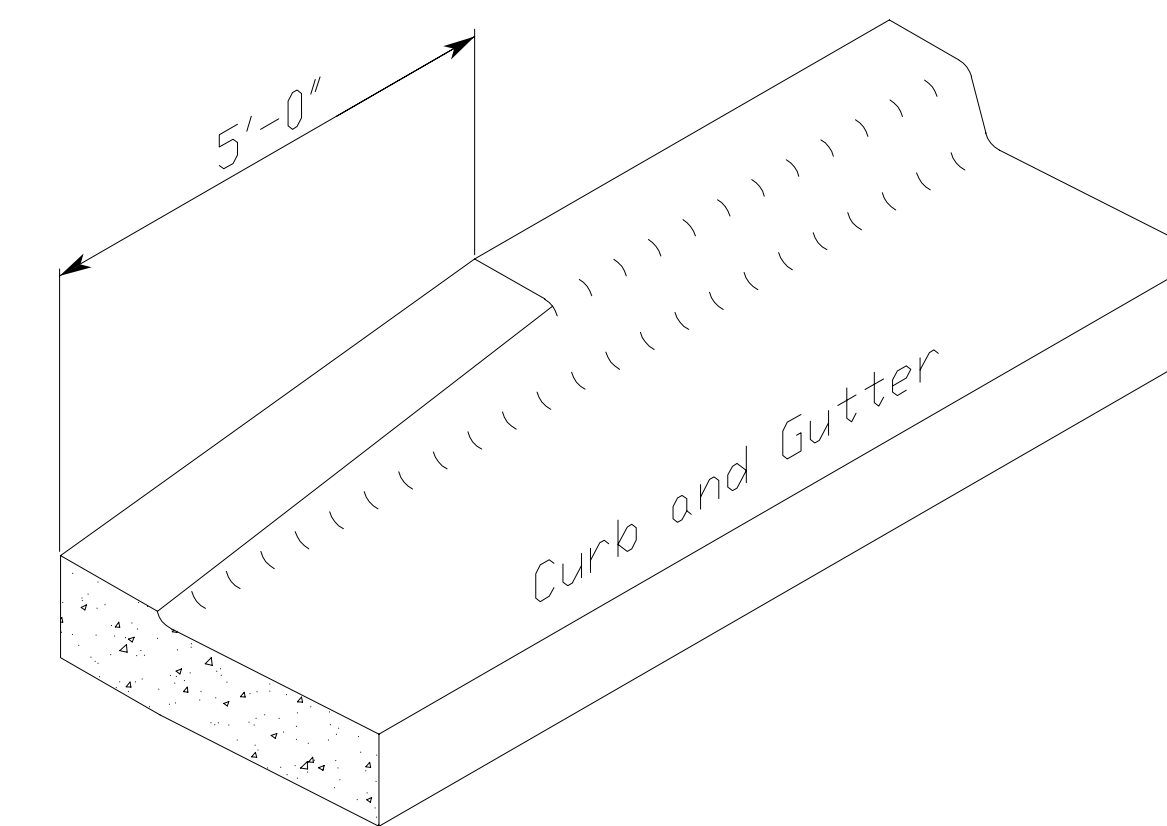
1/2" PREMOULDED EXPANSION JOINT (BITUMINOUS) SHALL BE USED AT 75' INTERVALS. ALL EDGES AND JOINTS TO BE ROUNDED TO 1/4" INCH RADIUS.



SILT FENCE  
NOT TO SCALE

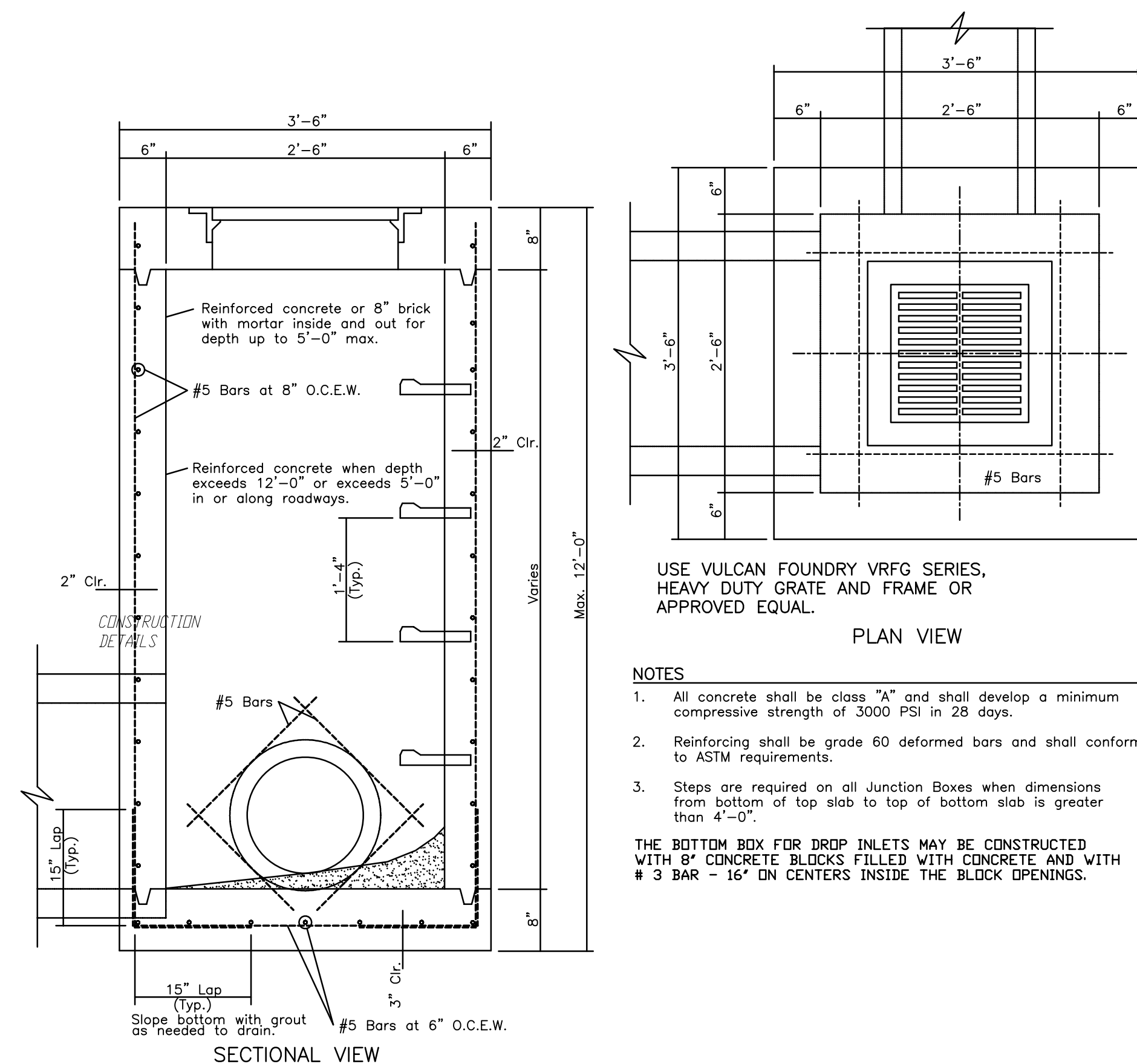


TYPICAL RIPRAP DETAIL



CURB END DETAIL

NOT TO SCALE  
NOTE: REQUIRED AT ALL CURB AND GUTTER TERMINATIONS



JUNCTION BOX FOR 15" TO 24" PIPES  
NOT TO SCALE

USE VULCAN FOUNDRY VRFG SERIES,  
HEAVY DUTY GRATE AND FRAME OR  
APPROVED EQUAL.

NOTES

- All concrete shall be class "A" and shall develop a minimum compressive strength of 3000 PSI in 28 days.
- Reinforcing shall be grade 60 deformed bars and shall conform to ASTM requirements.
- Steps are required on all Junction Boxes when dimensions from bottom of top slab to top of bottom slab is greater than 4'-0".

THE BOTTOM BOX FOR DROP INLETS MAY BE CONSTRUCTED WITH 8" CONCRETE BLOCKS FILLED WITH CONCRETE AND WITH #3 BAR - 16" ON CENTERS INSIDE THE BLOCK OPENINGS.

CONSTRUCTION DETAILS

for  
ATHENS DIALYSIS CLINIC

DUNIVANT ENGINEERING COMPANY, INC.  
112 CLOVERLEAF DRIVE  
ATHENS, ALABAMA 35611  
TELEPHONE (256) 232 - 9711  
FACSIMILE (256) 232 - 9722