

CITY OF ATHENS, AL
LANDSCAPE REQUIREMENTS

Interior Landscape Required:
Min. Interior Landscape Area =
Total Paved Area x [1.826 + (0.00435 x Parking)] / 100
Total Paved Area = 17069 S.F. 30 Parking Spaces
Min. Interior Landscaped Area = 334 S.F.
% of Paved Area = 1.96 %

Total Interior Landscape Provided =
213 S.F. + 254 S.F. = 467 S.F.

Interior Landscape Plant Materials Required:
Required (1) Tree & 4 Shrubs per 200 S.F.
= (3) Trees and (10) Shrubs

PROVIDED:
(2) CRAPE MYRTLE (12) AZALEA OR BOXWOOD
(2) DOGWOOD (12) SHRUBS
(4) TREES (12) SHRUBS

Foundation Landscape Required:
5' Depth along front of Building = 5 x 68 = 340 S.F.

Foundation Landscape Provided: 392 S.F. of Seasonal Color

Frontage Landscape Plant Materials Required:
Required (1) Tree & (6) Shrubs per 50 L.F.
162 - 31' Driveway = 131 L.F.
= (3) Trees and (16) Shrubs
Area of Frontage Landscaping Provided = 642 + 510 = 1152 S.F.

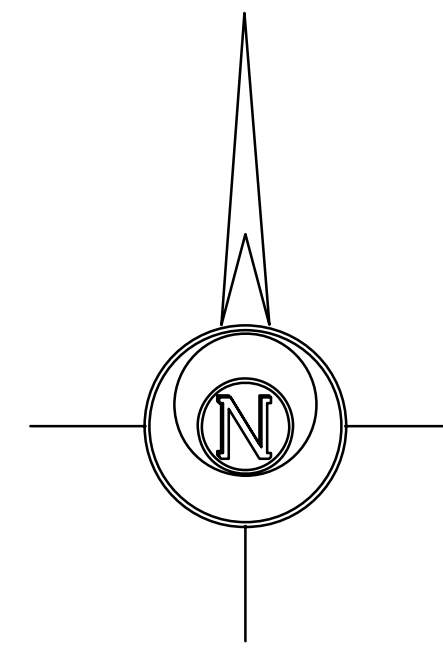
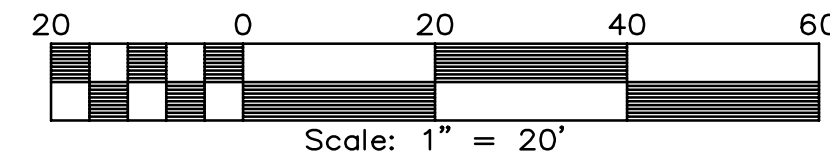
PROVIDED:
(3) CRAPE MYRTLE (18) AZALEA OR BOXWOOD
(2) DOGWOOD (18) SHRUBS
(5) TREES (18) SHRUBS

Perimeter Landscape Plant Materials Required:
Required (1) Tree & (6) Shrubs per 50 L.F.
Perimeter Length = 247' + 75' + 85' = 407 L.F.
= (9) Trees and (49) Shrubs
Area of Perimeter Landscaping Provided = 895 + 349 + 658 = 1902 S.F.

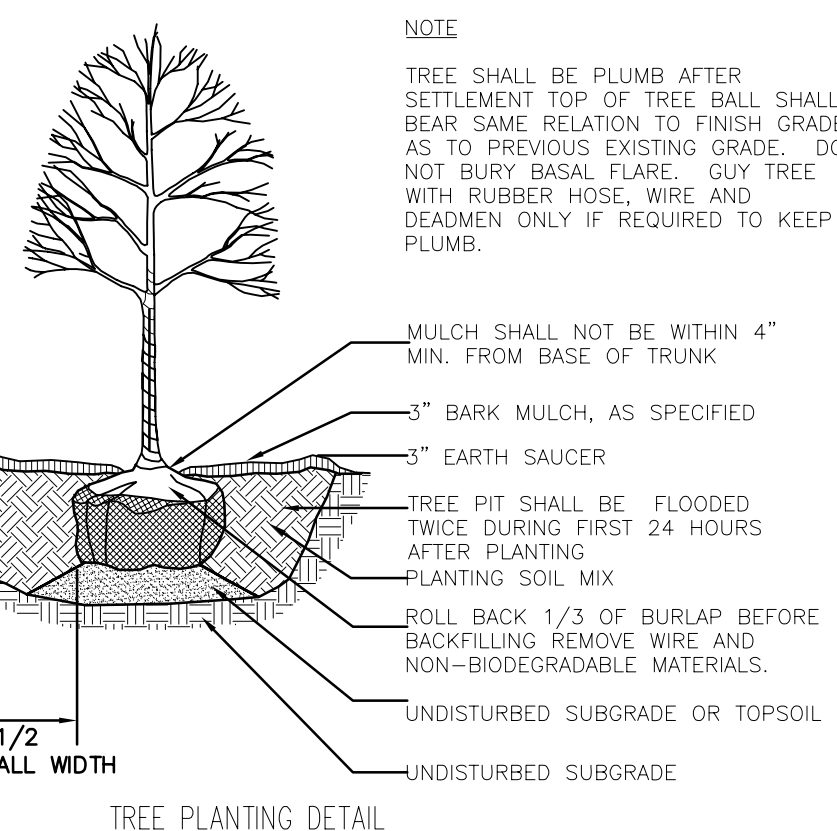
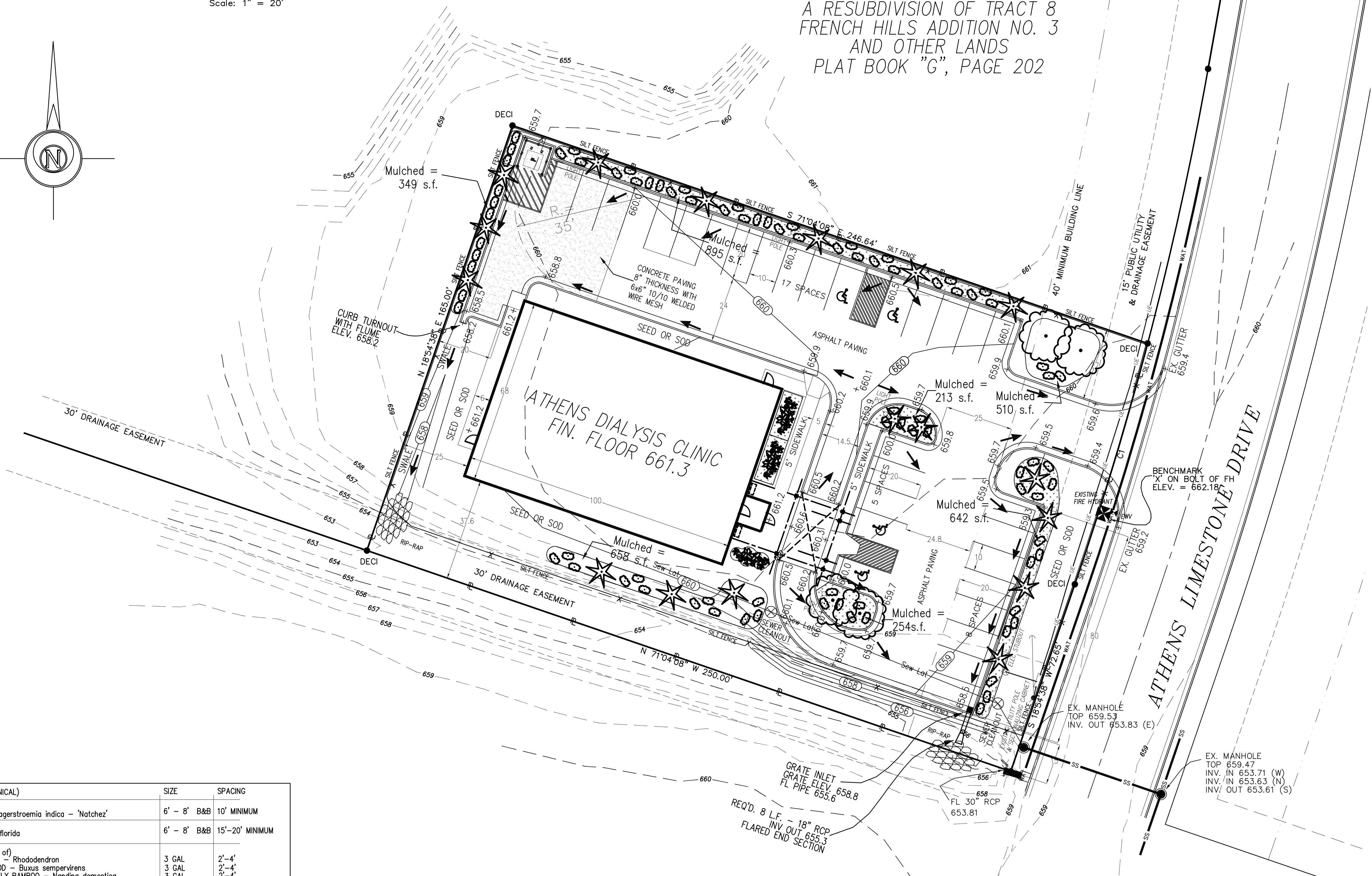
PROVIDED:
(11) CRAPE MYRTLE (54) AZALEA OR BOXWOOD
(11) TREES (54) SHRUBS

Minimum 6% of the Total Site Area
to be Landscaped:
Site Area = 0.94 Acres
(6%) of 0.94 Ac = 0.06 Ac = 2,457 S.F.
Total Landscape Area Provided
= 467 S.F. + 392 S.F. + 1152 S.F. + 1902 S.F.
= 3913 S.F. = 9.6 % of Total Site

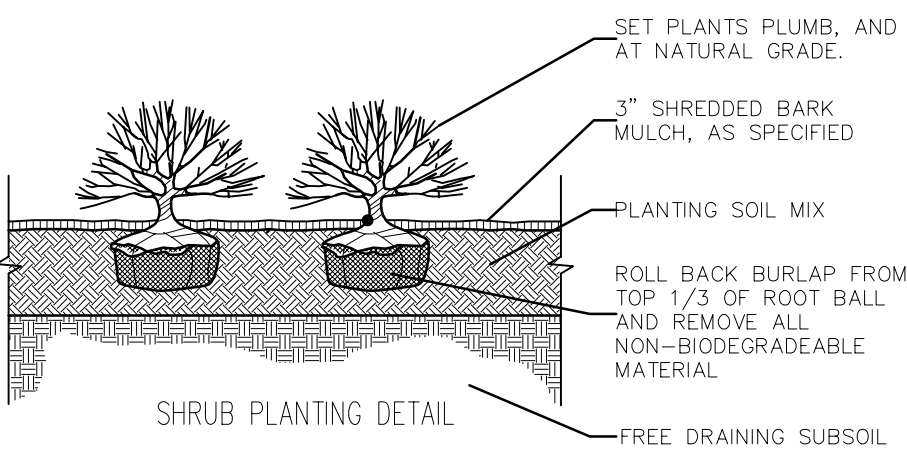
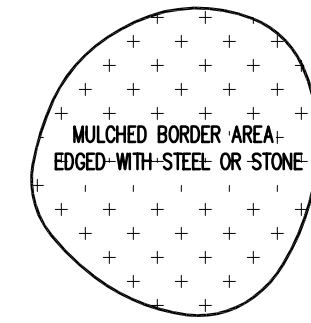
NUMBER	Delta	Radius	Arc	Chord	Brg.	Chord
C1	04°10'13"	1270.00'	92.43'	S 16°49'32" W		92.41'



THIS LOT IS PART OF
TRACT 21
CENTERPOINTE CROSSING
A RESUBDIVISION OF TRACT 8
FRENCH HILLS ADDITION NO. 3
PLAT BOOK "G", PAGE 202



NAME (COMMON - BOTANICAL)	SIZE	SPACING
(16) CRAPE MYRTLE - Lagerstroemia indica - 'Natchez'	6' - 8' B&B	10' MINIMUM
(4) DOGWOOD - Cornus florida	6' - 8' B&B	15'-20' MINIMUM
(84) SHRUBS (choice of) AZALEA - Rhododendron BOXWOOD - Buxus sempervirens HEAVENLY BAMBOO - Nandina domestica	3 GAL 3 GAL 3 GAL	2'-4' 2'-4' 2'-4'
SEASONAL COLOR - Bulbs/Annals		



TREES AND SHRUBS LISTED MAY BE SUBSTITUTED WITH ANY PLANT APPROVED BY THE CITY OF ATHENS AND THE OWNER.
ALL LANDSCAPED AREAS TO BE TOP DRESSED WITH A MINIMUM OF 3" OF FINE GRADE BARK MULCH. 54 cy REQUIRED.
REMAINING LANDSCAPED AREAS TO BE GRASSED.

PARKING REQUIREMENTS:
1 DOCTOR = 6 SPACES
12 EMPLOYEES = 12 SPACES
6 + 12 = 18 SPACES REQUIRED

THIS PROPERTY IS ZONED B-3 (HIGHWAY BUSINESS)
THIS BUILDING CONTAINS 6800 S.F.
THIS SITE REQUIRES 18 PARKING SPACES
THIS SITE CONTAINS 30 PARKING SPACES
654.5+ = FINISHED SPOT ELEVATION
--- 685 --- ORIGINAL CONTOUR
--- 686 --- FINISHED CONTOUR
--- WATER LINE
--- SILT FENCE
* = FIRE HYDRANT / = UTILITY POLE
[] = NO PARKING AREAS (PAINT STRIPE) [] = WATER METER BOX

DECI ● = EXISTING 5/8" REBAR WITH CAP STAMPED "DUNIVANT ENGR CO CA-0044-LS"
● = EXISTING 5/8" REBAR WITH CAP STAMPED "C&K CA-0489-LS"
← = GUY WIRE
UE = UNDERGROUND ELECTRIC

NOTES:
THE LOCATION OF EXISTING UNDERGROUND UTILITIES SHOWN ARE THE RESULT OF A CALL TO ALABAMA LINE LOCATORS ON 09-28-05. REFERENCE NUMBER: 052711499.
THE LOCATION OF EXISTING UNDERGROUND UTILITIES ARE SHOWN IN AN APPROXIMATE MANNER ONLY.

LANDSCAPING PLAN
for
ATHENS DIALYSIS CLINIC
DUNIVANT ENGINEERING COMPANY, INC.
112 CLOVERLEAF DRIVE
ATHENS, ALABAMA 35601
TELEPHONE (256) 232-9711
FACSIMILE (256) 232-9722
SCALE: 1" = 20" JUN 2013 SEPTEMBER 14, 2007